

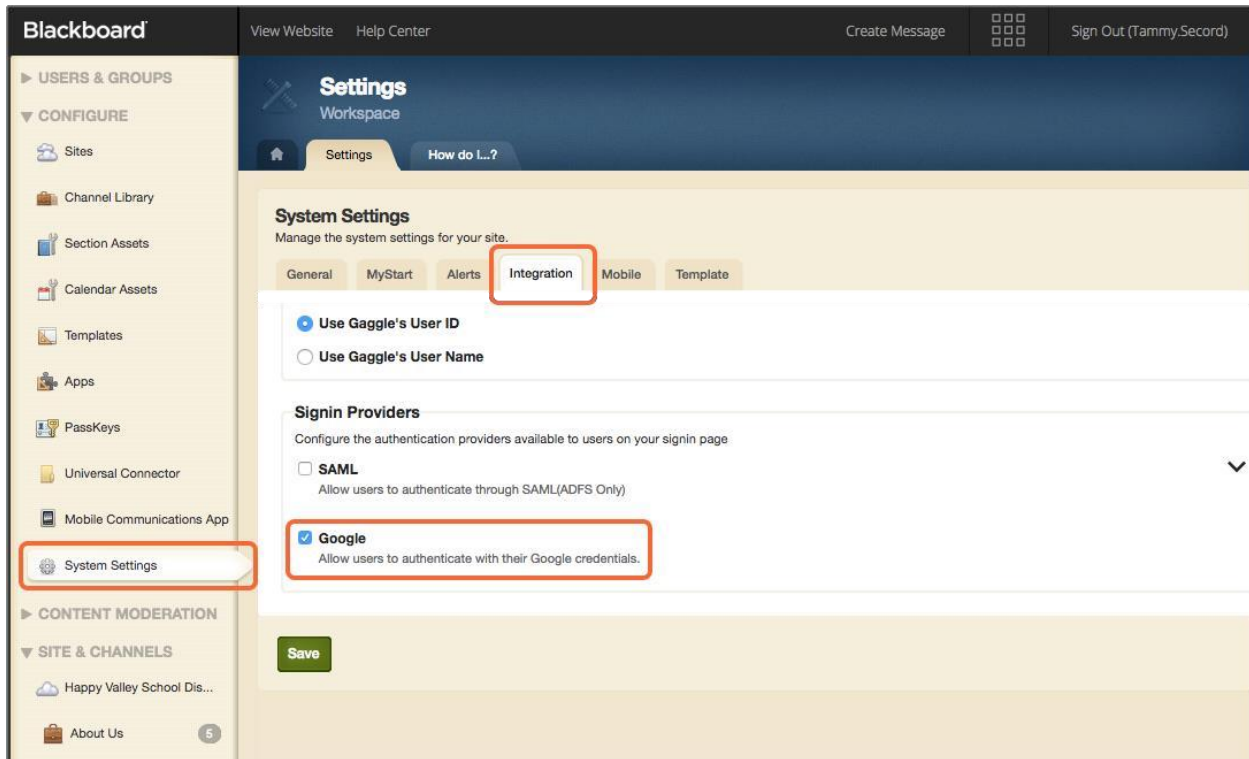
Web Community Manager 2.20 Release Notes

Note: Please use the following link to see the updated version of this .pdf: [Release Notes](#)
[New or Changed Functionality or User Experience](#)

GENERAL

Sign-in with Google Login

You can now allow users to sign-in with their Google™ login information. The user's Google email address must be associated with their user account and be unique.



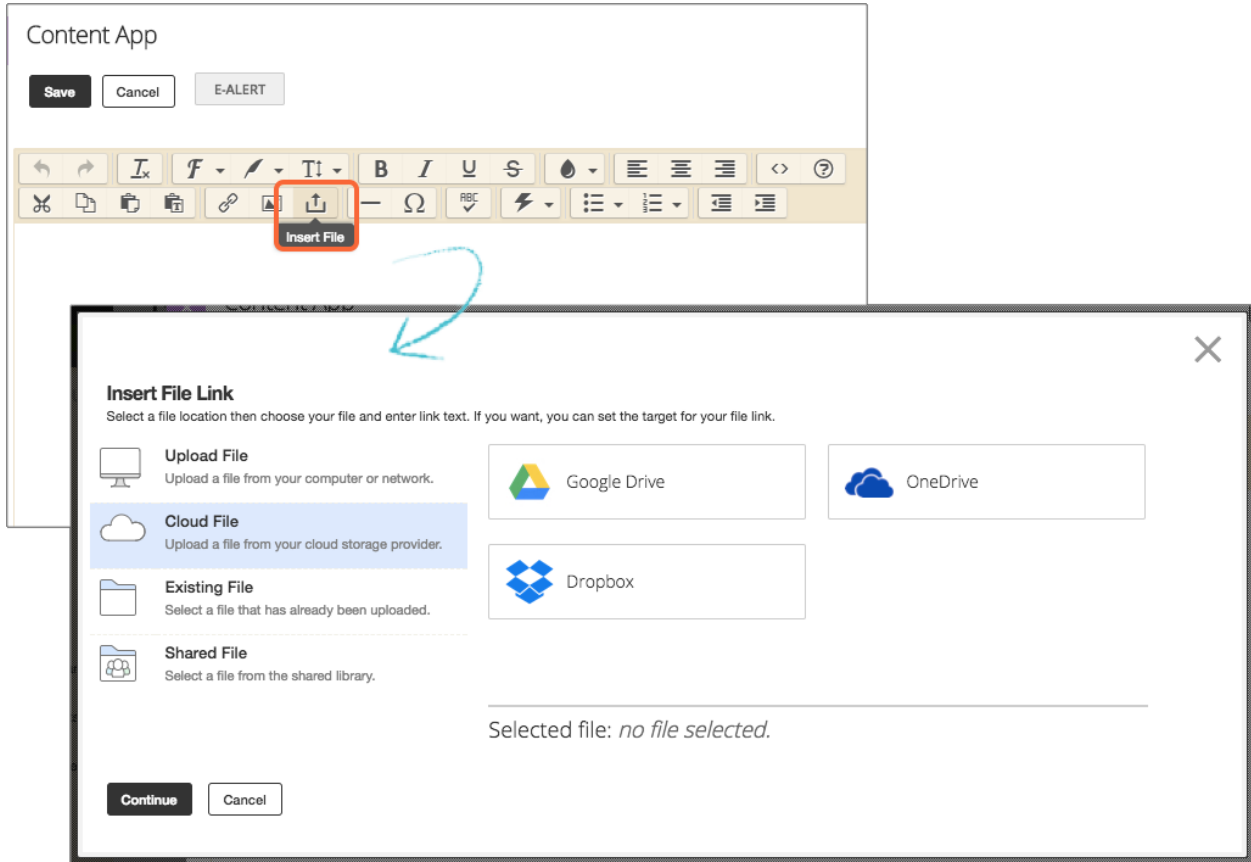
- [More on signing in with Google for registered users](#)
- [More on allowing registered users to sign-in with Google](#)

Web Community Manager 2.20 Release Notes

Cloud storage Dropbox integration

Directors and editors can now use Dropbox files and images in their site content. A Dropbox option is included as one of the Cloud File options when inserting a file or image. After users select Dropbox as an option they need to provide their Dropbox login information to access their files.

Note: When adding a Dropbox file, it is saved to the WCM as a unique copy of the original file. It is not linked to the original file on Dropbox. Edits to one does not change the other.



➤ [More on using integrating with cloud-based storage](#)

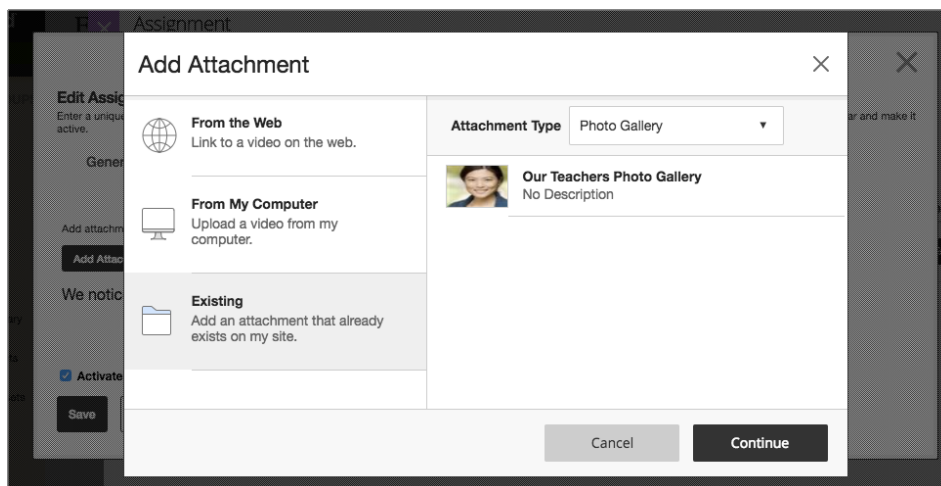
Web Community Manager 2.20 Release Notes

Page editing experience enhancements

Attach existing photo galleries and videos

Users can attach already existing photo galleries and videos to the Headlines & Features, Assignment, Article Library, and Blog apps.

Note: Each time you attach an existing photo gallery or video to an app it becomes a unique item. Any updates you make to the original gallery or video must also be made here.

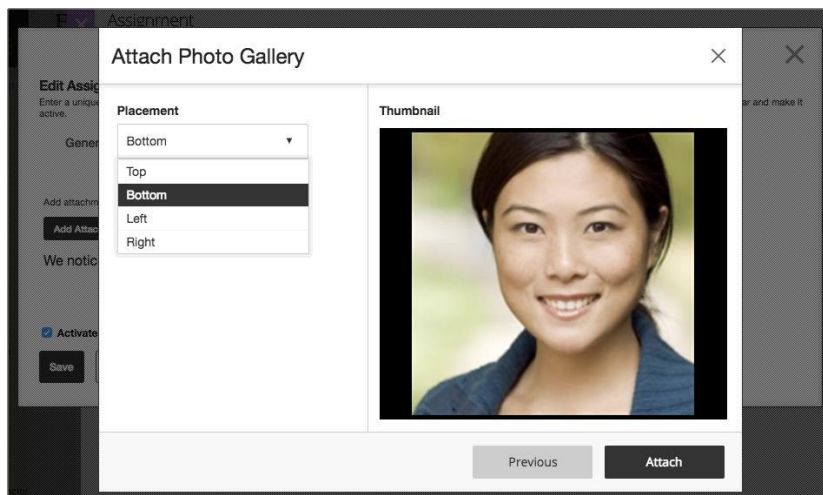


Align the existing attachment to app content

You can also decide where you want the existing attachment to appear. Place the attachment to the top, bottom, left, or right of the app content.

For example, if a you place a photo gallery attachment to the Bottom of an assignment, the gallery appears below the assignment directions.

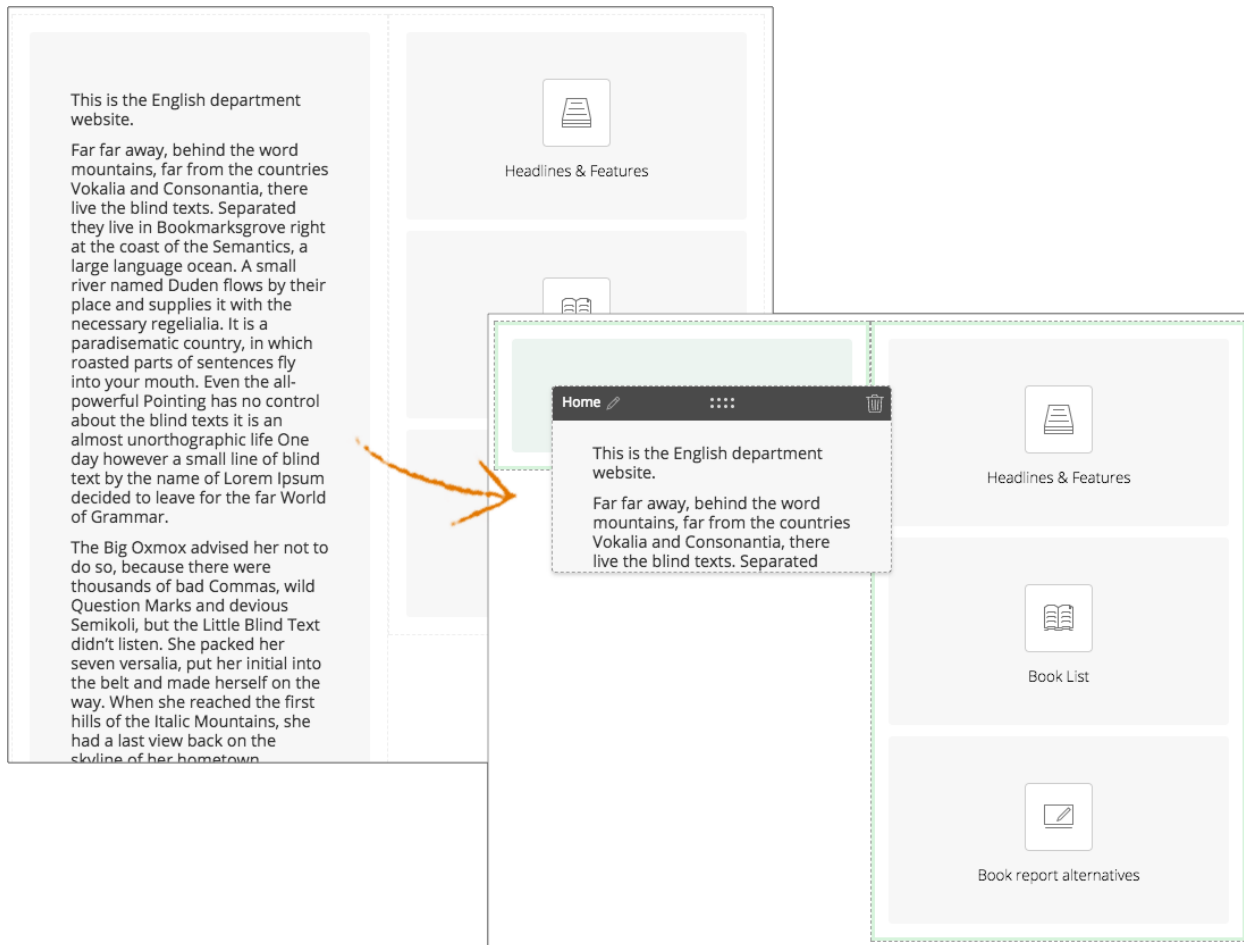
Note: If your page uses a two-column layout or you're on a mobile device, the attachment appears above or below the app content only.



Web Community Manager 2.20 Release Notes

See more of your page layout when moving apps

We've made it easier to see the apps on a page when rearranging them. Now Content apps with a lot of content minimize when moving any app on the page. This helps you see other apps above or below it easier. It also means you don't have to do a lot of scrolling when moving apps on the page.

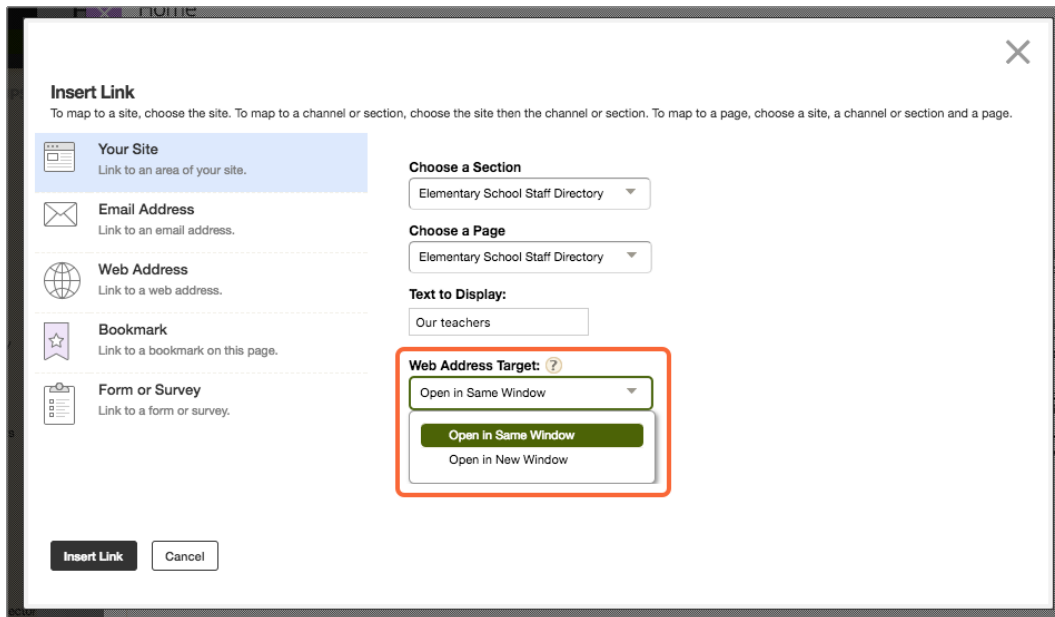


Web Community Manager 2.20 Release Notes

Decide target window for linked content

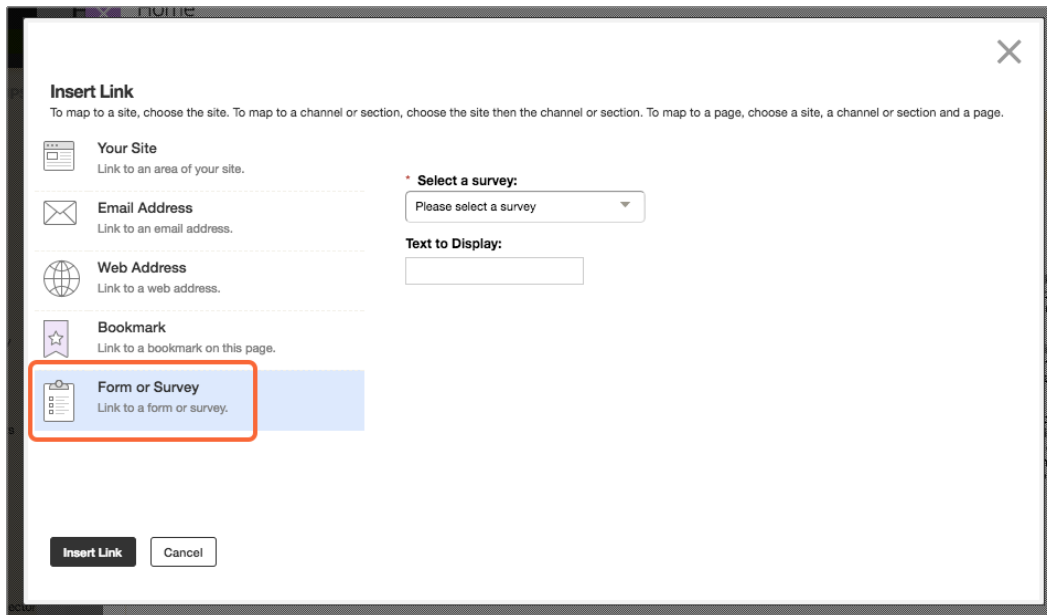
When linking to a page on your own site you can decide if you want the linked content to appear on the same page or in a new browser window.

Note: If you select New window as the target window, the linked content may open in a new window or a new tab. This depends on your browser settings.



Link to surveys

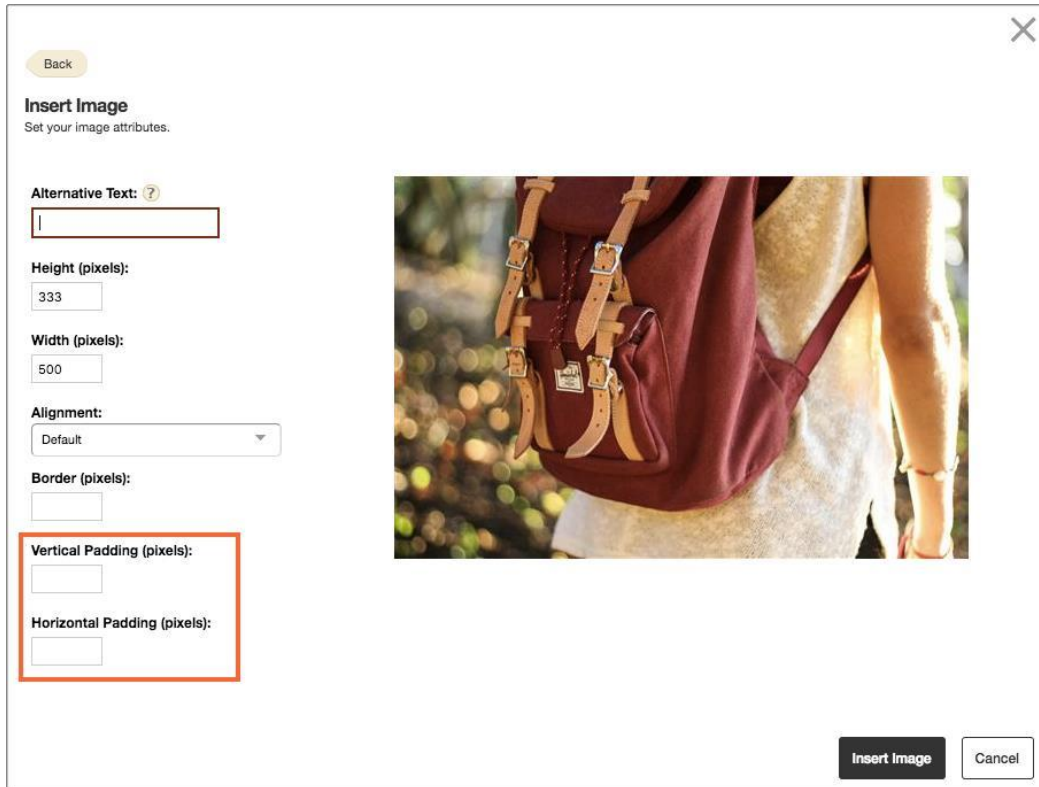
There is now a *Form or Survey* option available on the *Insert Link* panel. This makes linking to an existing form or survey much easier. Linked forms and surveys open in a new window by default.



Web Community Manager 2.20 Release Notes

Insert image padding options

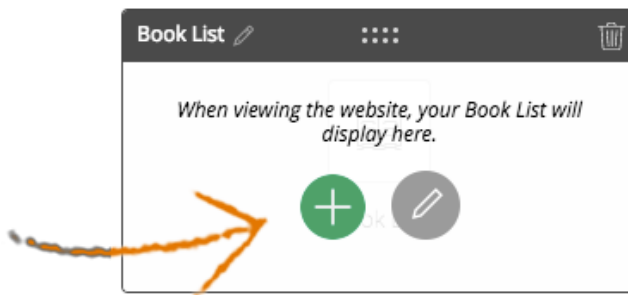
You can now add padding to images when using the *Insert Image* wizard. Padding adds space between the image and surrounding content.



New page editing quick adds

You can now add calendar events, assignments, lunch menus and books quicker than ever. We've added a quick add button to the Calendar, Assignment, Lunch menu and Book List apps so you can add those items without opening or editing the app.

Note: This only adds the basic information for each item. You need to edit the item for more advanced options.

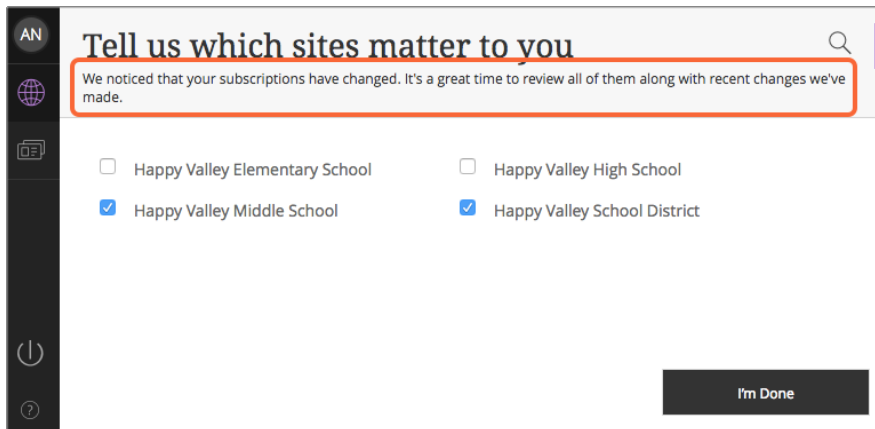


Web Community Manager 2.20 Release Notes

Dashboard personalization enhancements

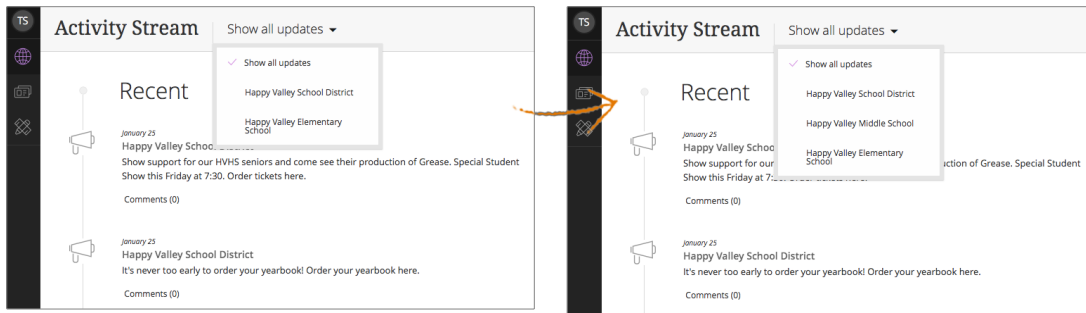
A user's stream switches schools when they do

Students and their parents move schools during their school career. For example, from elementary to high school. Now when an administrator in the school system adds the student to a new school, the information is passed to the WCM and their activity stream is updated to reflect that.

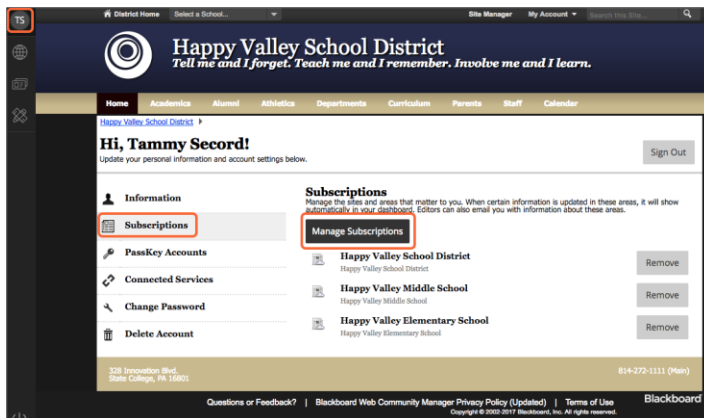


The next time the user logs in, the user will see the new school information in their activity stream and see a message telling them of the change.

Users can also update their own stream subscription



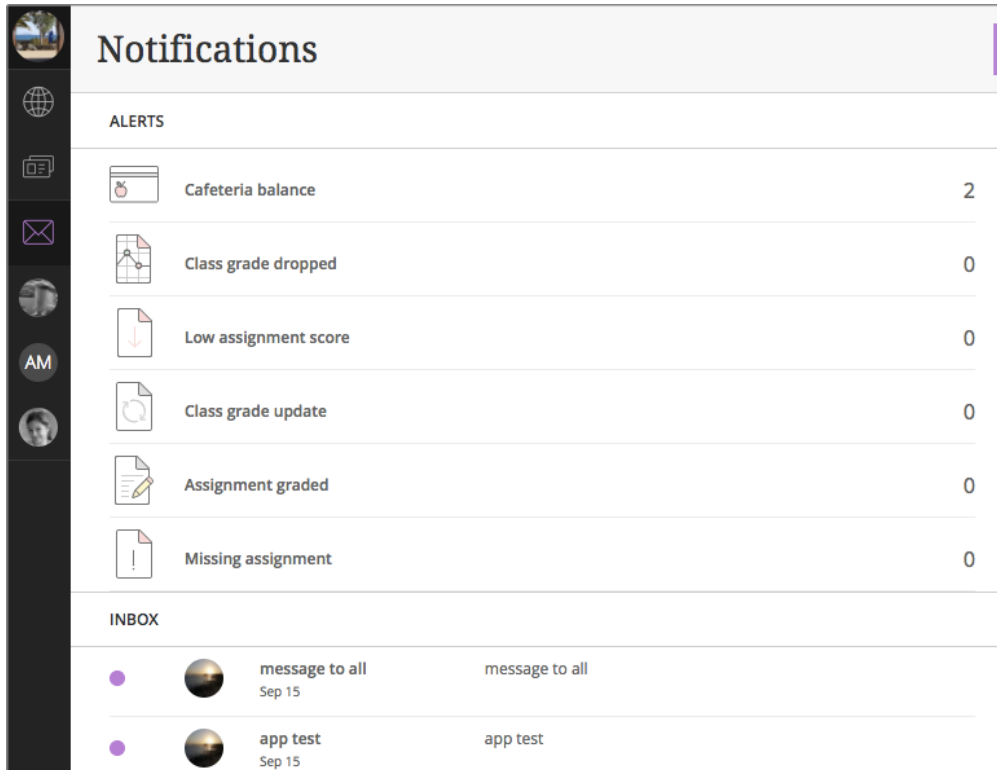
All they need to do is change their subscriptions in their user profile.



Web Community Manager 2.20 Release Notes

Users can see alerts and notifications from their dashboard

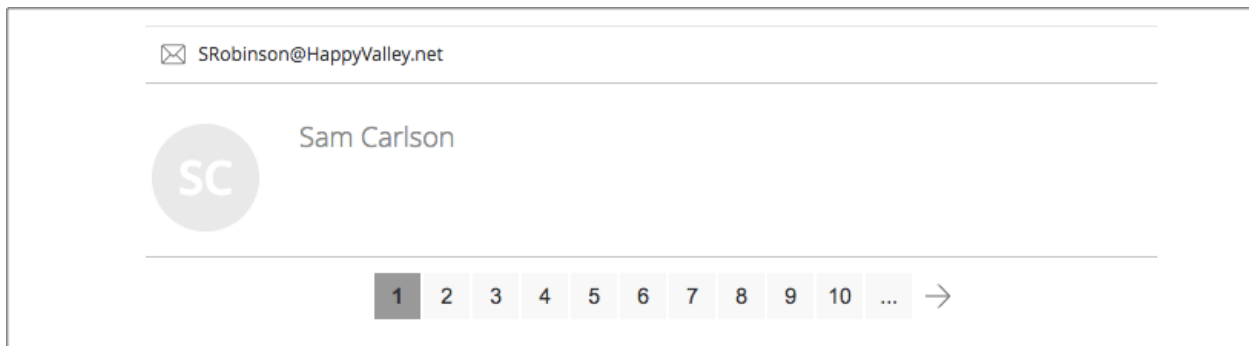
Users, such as parents, on sites that are integrated with MCA or Mass Notifications, or both, can see their alerts in Notifications in the site Dashboard.



The different notification types include: Low Assignment Score, Cafeteria Balance, Class Grade Update, Assignment Graded, and Missing Assignment. Users can select each alert for more information regarding it. For example, if they select the Cafeteria Balance they see the balance for each student they are related to.

Paging enhancements for apps with many records

We've updated the look and feel when navigating through apps with many records.



Web Community Manager 2.20 Release Notes

Added support for SAML for Active Directory Federation Services ADFS4.0

Active Directory Federation Services (ADFS) is a software component developed by Microsoft. It can be installed on Windows Server operating systems so that users have single sign-on access to systems and applications. To learn more, see [Setup ADFS](#).

Resolved Issues

We have resolved the following issues in this release. We've listed the issues as they were originally entered and in the order that they were reported.

Functional Area	Subject
Accessibility	Page navigation needs to be compliant with the American's Disability Act (ADA).
Accessibility	User registration need to be compliant with the ADA.
Accessibility	The Assignments app need to be compliant with the ADA.
Accessibility	The Article Library needs to be compliant with the ADA.
Accessibility	Site search needs to be compliant with the ADA.
Accessibility	The Twitter app needs to be accessible.
Accessibility	Headlines & Features needs to be compliant with the ADA.
Accessibility	Announcements needs to be compliant with the ADA.
Accessibility	Blogs/Sidebar needs to be compliant with the ADA.
Accessibility	Comments control needs to be compliant with the ADA.
Accessibility	Icon font needs to be compliant.
Accessibility	Channel navigation menu needs to be compliant with the ADA.
Accessibility	When users press the Down arrow in the Paging control to get to the current page, JAWS is only reading the page number and not the aria label.
Forms & Surveys	Unable to complete a survey using Internet Explorer® (IE) 11 or Microsoft Edge®.
Groups	Group dropdown is empty in 'Permanently Delete Group' dialog
Import	Import table isn't refreshed
TinyMCE	TinyMCE – when about button is clicked, console shows three error messages
Visitor Comments	Approve Visitor Comments – Dropdowns are not working
Facebook	Unable to connect to Facebook in Site Manager

Web Community Manager 2.20 Release Notes

<i>Functional Area</i>	<i>Subject</i>
Table	NPE – Table App – context menu covers text after you highlight it
Content Contribution	Content Contribution – Insert File > Shared and Existing dropdowns are open by default
Space Workspace	Space workspace subheader color is broken.
Image	Image App: proportions are not displayed correctly
Relative URLs	Relative URLs Not Loading on End User Site
Forms & Surveys	Forms & Surveys – Error Message When Survey Options Set To ‘Display Results Immediately’
Insert Image	Insert image dialog: check height is done only in one place
AMS	AMS – unable to add or remove app
Image	Image App wrong values of width and height during inserting
Error Message	Error message when trying to edit a Blog Article or Headline record in classic edit
File Library	File Library – Clicking Save while the file is uploading will not save the file
Space Directory	Space Directory App: App name not reflecting at EU – rendering App type instead
Datepicker	Datepicker disappear with whole dialog on ESC
Site Manager Sidebar	Site Manager Sidebar – Section Editor With No Sidebar Is Seeing The Common Tools Pushed Down Screen
User	Update User doesn’t remove Passport value
Paging	Show more button hover style not being restored after first paging click for stream or inbox
Dashboard	ADA Tabbing to the x and pressing escape closes all layers
About Teacher	About Teacher App – Email Address Field Display Is Missing a Space Between ‘Email:’ and the Email Address
Table	Table App: Tool bar not popping up as expected
Dashboard	Dashboard – If user avatar is initials, it is throwing a 404 error when accessing MyAccount
Forms & Surveys	Forms/Surveys – after completion message is deleted, saved it cannot be resaved
Calendar	Calendar assets – color picker is cut off when editing a Category at the bottom of a list (Chrome Only)
Password	Firefox Only – Firefox is Populating Credentials In the ‘FF Save password message panel’ with a password of DES: when the Gaggle District Password is empty
Forms & Surveys	Forms and Surveys: back button not displaying properly

Web Community Manager 2.20 Release Notes

<i>Functional Area</i>	<i>Subject</i>
Document Viewer	Document Viewer: When file contains two or more spaces the encoding only encodes one space
Community	Community editing – Overlays are appearing under editing overlay and dropdown menus aren't populating
Calendar	New Calendar Event dialog uses date from the server
Surveys	Surveys – Misspelling
Parent Link	Parent Link – An alert is not appearing on SW site
iCal Feed	iCal Feed – The event location is not in the iCal feed
Calendar	Calendar – Delete registration from event at bottom of a long list of events in rosters tab causes jump to top of screen IE 11 and Edge
Error	JS error after confirm dialog when editing the alias of a subsite
Image	Uploading image: no check of border size
Announcements	Announcements app – wrong validation for end dates
Page	Create page test – page name contains iFrame
Alumni Directory	Alumni Directory – setting image size on End User doesn't reflect size set in Site Manager

Technical Requirements

Here are the [Web Community Manger End-User Technical Requirements](#).

The [Blackboard Privacy Policy](#) updated to reflect the Blackboard brand.

Google Chrome and MS Edge do not support Netscape Plugin Application Programming Interface (NAAPI) plug-ins. This affects file types in Podcasts and Rich Media Objects that use the QuickTime player. We'll address these in future releases.

Refresh Your Cache

It's always a good practice to clear your browser cache on a regular basis. [Refresh your Cache](#) shows you how to clear your cache in any browser.

Resources and Materials

As always, you can find resources and materials related to this release as well as to the many features and functions on the [Community Engagement Resource Center \(CERC\)](#) website. [Core Resources](#), [Hot Help Topics](#), [Apps Showroom](#), [Training](#) and [Creative](#)—we've got the information you need to succeed with your Web Community Manager website.